



Dimm Feeder (GS-JBT2101) [Single Track]

Our Product Introduction

Basic Information

- Place of Origin: China
- Brand Name: GS
- Model Number: GS-JBT2101
- Minimum Order Quantity: 1
- Price: USD+negotiable+pcs
- Packaging Details: 1000*1500*1600
- Delivery Time: 1-7 days
- Payment Terms: T/T
- Supply Ability: 1+pcs+per days



Product Specification

- Model: GS-JBT2101
- Dimensions (length * Width * Height Company Mm): Please Refer To The Following Drawings
- Weight: 220KG
- Working Voltage: AC 220V
- Air Source Requirements: 0.5-0.7Mpa
- Maximum Power: 900W
- Feeding Speed: 2.5s/Pcs
- Operation Panel: Siemens Operation Screen
- Control: Siemens PLC
- Thoroughfare: 1 Channels(The Position Can Be Customized In The Left And Right Directions)
- Adapt To The Material Tray: Please Refer To The Following Drawings
- Material: Compatible With PTH And SMT Materials

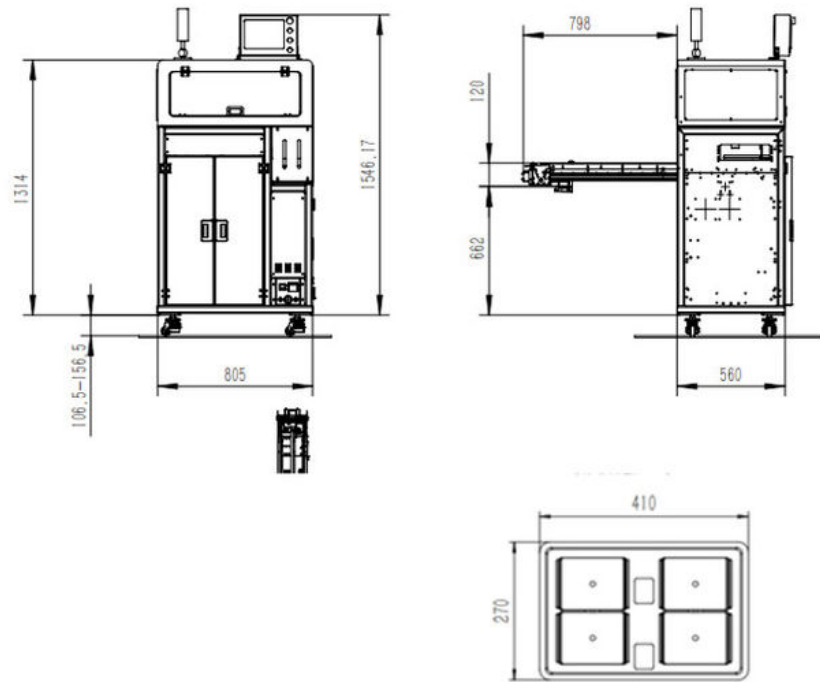


Product Description

GS-JBT2101(Monorail)

A DIMM feeder is a component supply device that neatly arranges multiple stacked disk DIMM slots and sends them out one by one at a specified time to supply the insertion machine.





The size of the pallet exceeds the range, and the external dimensions of the equipment need to be increased.

If there are special material dimensions, you can contact our company for a solution and customize a dedicated feeder.