



Silver Double Sensor SMT Splice Tape For FUJI GSM28 Series

Basic Information

- Place of Origin: China
- Brand Name: GS
- Model Number: GSM2808/GSM2812/GSM2816/GSM2824
- Minimum Order Quantity: 1 PCS
- Price: USD+negotiable+pcs
- Packaging Details: 26*40*10mm
- Delivery Time: 1-7 days
- Payment Terms: T/T
- Supply Ability: 1+pcs+per days

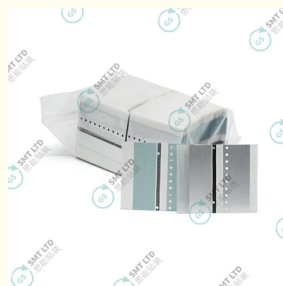


Product Specification

- Brand Name: GS
- Material: PET
- Model Number: GSM2808/GSM2812/GSM2816/GSM2824
- Product Name: SMT Double Sensor Splice Tape
- Application: SMT Process
- Customization: Support
- Highlight: FUJI SMT Splice Tape, GSM28 SMT Splice Tape, Silver Double Sensor Splice Tape



More Images



Product Description

GSM28 Series Silver SMT Double Sensor Splice Tape For FUJI

GSM28 Series Silver SMT Double Sensor Splice Tape for Fuji machines with an intelligent feeder. Each size has placement holes that can be used with the alignment jigs

Detailed Instructions for Use

Step 1: Prepare the Carrier Tapes

1. Cutting: Use a precise cutting tool to accurately cut the carrier tapes at the desired splice point. Ensure that the cuts are clean and straight to facilitate a seamless join.

Step 2: Prepare the Splice Tape

1. Remove the Release Liner: Carefully remove the release liner from the splice tape to expose the adhesive side. This step is crucial for ensuring a strong bond between the carrier tapes and the splice tape.

Step 3: Align the Carrier Tapes

1. Align with Placement Holes: Align the cut carrier tapes (with the cover tape facing down) with the splice tape's placement holes. The placement holes are designed to guide the carrier tapes into the correct position for splicing.

Step 4: Apply the First Strip

1. Attach to Splice Tape: Place the ends of the joining carrier tapes onto the first strip of the splice tape. Ensure that the tapes are aligned properly and that the adhesive side of the splice tape makes full contact with the carrier tapes.

Step 5: Secure the Splice

1. Fold Over and Press: Fold the second strip of the splice tape over to the underside of the carrier tapes and press firmly. This step ensures that the splice is secure and that the adhesive forms a strong bond with both sides of the carrier tapes.

Step 6: Finalize the Splice

1. Remove Clear Plastic Cover: To complete the splice, remove and discard the clear plastic cover from the splice tape. This final step ensures that the splice is ready for feeding into the FUJI machine.

Part (reel)	Dimensions (pc)	Package(box)
GSM2808 (8mm)	4.5/7.5mm x 38mm	500pcs
GSM2812 (12mm)	8.5/11.5 mm x 38mm	500pcs
GSM2816 (16mm)	15.5/13 mm x 38mm	500pcs
GSM2824 (24mm)	21/24 mm x 38mm	250pcs



Silver SMT Double Sensor Splice Tape For FUJI GSM28 Series | GSSMT, SMT double splice tape, SMT double splice tape for pick-and-place, SMT double splice tape yellow, SMT double splice tape suppliers, Double splice tape for SMT machines, SMT double splice tape adhesive, SMT double splice tape black, SMT double splice tape usage guide, SMT double splice tape for feeders, High-quality SMT double splice tape, SMT double splice tape price, SMT splice tape double-sided, Double splice tape for Panasonic SMT, Double splice tape for Fuji SMT, SMT double splice tape compatibility, Double splice tape for high-speed SMT machines, SMT double splice tape performance, SMT double splice tape durability, SMT splice tape double strength, SMT double splice tape best practices



Global Soul Limited



+8613728696610



liyi@gs-smt.com



smtmachinepart.com

Room F3B-016, B Block, Hao Yun Lai Bussiness Building, Liutang road , Bao'an District , Shenzhen, China