

8 Holes Positioning SMT Double Splice Tape Universal GSM15 Series

Our Product Introduction

for more products please visit us on smtmachinepart.com

Basic Information

- Place of Origin: China
- Brand Name: GS
- Model Number: GSM1508/GSM1512/GSM1516/GSM1524
- Minimum Order Quantity: 1 PCS
- Price: USD+negotiable+pcs
- Packaging Details: 22*36*10mm
- Delivery Time: 1-7 days
- Payment Terms: T/T
- Supply Ability: 1+pcs+per days

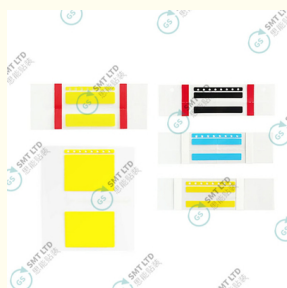


Product Specification

- Brand Name: GS
- Material: PET
- Model Number: GSM1508/GSM1512/GSM1516/GSM1524
- Product Name: SMT Double Splice Tape
- Application: SMT Process
- Customization: Support
- Highlight: Universal SMT Double Splice Tape, GSM15 Double Splice Tape, 8 Holes Positioning SMT Splice Tape



More Images



Product Description

GSM15 Series 8 Holes Positioning Universal SMT Double Splice Tape

GSM15 series splice tape is used for jointing carrier tapes in the SMT process. It is made of tapes and polyester film and release paper, and the tape is with superior adhesion.

Advanced Features for Modern Manufacturing

1.Ease of Use


The GSM15 series splice tape is designed with ease of use in mind. The step-by-step instructions ensure that even operators with minimal training can effectively use the splice tape. The straightforward application process, from cutting the carrier tapes to securing the splice, minimizes the time and effort required, further enhancing operational efficiency.

2.Customization Options

The ability to request specific sizes of splice tape provides we with the flexibility to customize the splice tape according to their unique requirements. This customization ensures that the splice tape can be tailored to fit specific applications, making it a highly adaptable tool for diverse manufacturing needs.

3.Durability and Longevity

The high-quality construction of the GSM15 series splice tape ensures that it can withstand the rigors of continuous use in a manufacturing environment. The durable materials and superior adhesion guarantee that the splices remain intact throughout the production process, reducing the likelihood of tape failures and production stoppages.

Part (reel)	Dimensions (pc)	Package(box)	
GSM1508 (8mm)	2.5/4/4.5 x 34mm	500pcs	
GSM1512 (12mm)	2.5/8/8.5 x 34mm	500pcs	
GSM1516 (16mm)	2.5/12.5/12 x 34mm	500pcs	
GSM1524 (24mm)	2.5/20/19.5 x 34mm	250pcs	



8 Holes Positioning Universal SMT Double Splice Tape GSM15 Series | GSSMT, SMT double splice tape, SMT double splice tape for pick-and-place, SMT double splice tape yellow, SMT double splice tape suppliers, Double splice tape for SMT machines, SMT double splice tape adhesive, SMT double splice tape black, SMT double splice tape usage guide, SMT double splice tape for feeders, High-quality SMT double splice tape, SMT double splice tape price, SMT splice tape double-sided, Double splice tape for Panasonic SMT, Double splice tape for Fuji SMT, SMT double splice tape compatibility, Double splice

tape for high-speed SMT machines, SMT double splice tape performance, SMT double splice tape durability, SMT splice tape double strength, SMT double splice tape best practices



Global Soul Limited



+8613728696610



liyi@gs-smt.com



smtmachinepart.com

Room F3B-016, B Block, Hao Yun Lai Bussiness Building, Liutang road , Bao'an District , Shenzhen, China