



## 8mm Metal Sense SMT Splicing Tape Automatic Splicing Tape GSM3808

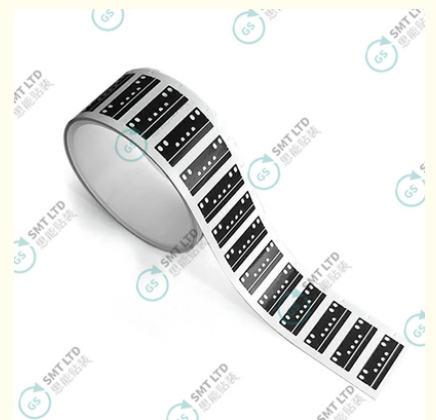
### Basic Information

- Place of Origin: China
- Brand Name: GS
- Model Number: GSM3808
- Minimum Order Quantity: 1 roll
- Price: USD+negotiable+roll
- Packaging Details: 16\*36\*8mm
- Delivery Time: 1-7 days
- Payment Terms: T/T
- Supply Ability: 1+roll+per days



### Product Specification

- Brand Name: GS
- Material: PET
- Model Number: GSM3808
- Dimensions (pc): 12mm X 32mm
- Product Name: Reel Type Splice Tape
- Application: SMT Process
- Customization: Support
- Lead Time: 1-3 Days
- Highlight: 8mm SMT Splicing Tape,  
Metal Sense SMT Splicing Tape,  
8mm Automatic Splicing Tape



### More Images



## Product Description

### GSM3808 8mm Metal Sense SMT Automatic Splicing Tape

GSM3808 Reel Type Splice Tape is specifically designed for jointing carrier tapes used in the Surface Mount Technology (SMT) process. This splice tape comprises adhesive tapes, a transparent release film, and removable PET (polyethylene terephthalate) backing.

#### 一,Application

1. Ideal for Automatic Splicing Machines:
  - Provides high jointing efficiency.
  - Optimized for use with automatic splicing machines.
2. Compatibility:
  - Suitable exclusively for 4mm carrier tapes.
3. Customization:
  - Customization options available to meet specific requirements.

#### 二,Advantages

1. Increased Productivity:
  - Enhances the output of Pick and Place machines by 5% to 30%.
2. Reduced Downtime:
  - Minimizes downtime associated with reel changes.
3. Lower Machine Wear:
  - Decreases abrasion on machines by reducing the frequency of feeder reloads.

#### 三,Instructions for Use

1. Cutting:
  - Use a cutting tool to accurately cut the carrier tapes to the required length.
2. Preparing the Splice Tape:
  - Remove the release liner from the splice tape to expose the adhesive side.
3. Positioning the Carrier Tapes:
  - Align and place the ends of the carrier tapes onto the first strip of the splice tape.
4. Securing the Splice:
  - After aligning the carrier tapes, press the splice tape firmly at various points to ensure a secure bond.

8mm Metal Sense SMT Automatic Splicing Tape GSM3808 | GSSMT, SMT splice tape, SMT splice tape for pick-and-place, SMT splicing solutions, SMT splice tape types, SMT splice tape price, SMT splice tape suppliers, SMT splice tape yellow, SMT splice tape black, SMT splice tape for feeders, SMT splice tape compatibility, SMT splice tape usage guide, High-quality SMT splice tape, SMT splice tape for Panasonic, SMT splice tape for Fuji, SMT splice tape adhesive, SMT splice tape performance, SMT splice tape advantages, SMT splice tape for high-speed machines, SMT splice tape durability, SMT splice tape best practices



Global Soul Limited



+8613728696610



liyi@gs-smt.com



[smtmachinepart.com](http://smtmachinepart.com)

Room F3B-016, B Block, Hao Yun Lai Bussiness Building, Liutang road , Bao'an District , Shenzhen, China