

## Universal SMT Single Splice Tape Adhesive For Carrier Tape

Our Product Introduction

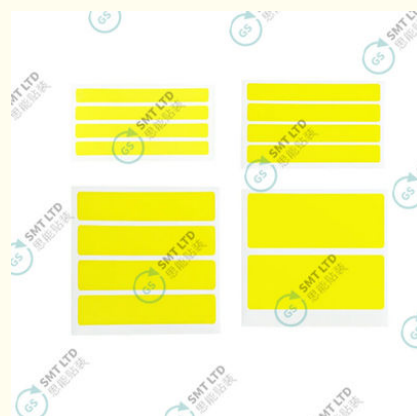
### Basic Information

- Place of Origin: China
- Brand Name: GS
- Model Number: GSM0308,GSM0312,GSM0316,GSM0324
- Minimum Order Quantity: 1/box
- Price: USD+negotiable+box
- Packaging Details: 20\*50\*10mm
- Delivery Time: 1-7 days
- Payment Terms: T/T
- Supply Ability: 1+box+per days

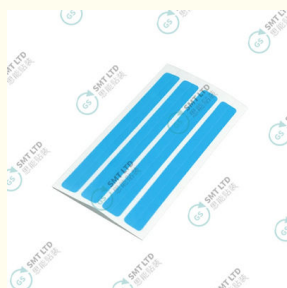


### Product Specification

- Model Number: M03 Series
- Material: PET
- Application: SMT Process
- Customization: Support
- Place Of Origin: Guangdong, China
- Delivery Time: 1-3 Days
- Highlight: Universal SMT Single Splice Tape, Carrier Tape SMT Splice Tape, Adhesive SMT Single Splice Tape



### More Images



for more products please visit us on [smtmachinepart.com](http://smtmachinepart.com)

## Product Description

### GSM03 Series Universal SMT Single Splice Tapes For Carrier Tape

#### Product Description

##### 1.1 Composition and Design:

The GSM0308 Single Splice Tape is a high-performance adhesive tape designed specifically for the SMT process. It consists of a single PET tape that ensures a strong and durable bond between carrier tapes. The PET material is known for its excellent adhesive properties and durability, making it ideal for the demanding environment of SMT production.

##### 1.2 Specifications:

- Compatibility:** The GSM0308 is recommended for use with splice tools and clips, such as the GSMTL20, GSMTL30, and GSMTL40, to create a stronger connection, particularly on larger carrier tapes.
- Tape Widths:** Available for larger carrier tapes ranging from 32mm to 88mm, providing versatility for different SMT applications.
- Customizability:** While standard sizes are readily available, custom sizes can be requested to meet specific production needs.

#### Applications

**Enhancing SMT Efficiency:** The GSM0308 Single Splice Tape is designed to significantly enhance the efficiency of the SMT process. By providing a reliable and robust connection between carrier tapes, it ensures continuous feeding of components to pick-and-place machines. This is particularly beneficial in high-volume production environments where any disruption can lead to significant downtime and reduced productivity.

#### Instructions for Use

##### 3.1 Step-by-Step Application

- Cutting the Carrier Tapes:** Use a cutting tool such as the MTL20, MTL30, or MTL40 to accurately cut the ends of the carrier tapes that need to be joined. Precise cuts are essential for a reliable splice.
- Setting Up the Splice Clip:** Place a splice clip (teeth up) on the placement pins of the splice tool. The splice clip provides additional strength and security to the connection.
- Positioning the Carrier Tapes:** Center both carrier tapes (cover tape up) on the placement pins of the splice tool. Secure the tapes in place using the clamps to ensure they do not move during the splicing process.
- Crimping the Tapes:** Crimp the handle of the splice tool to connect the carrier tapes. This action presses the splice clip into place, creating a strong and reliable bond between the tapes.
- Applying the Splice Tape:** Remove the release liner from the splice tape to reveal the adhesive side. Carefully add a single strip of the splice tape to the cover tape, ensuring it is aligned correctly.
- Securing the Splice:** Press firmly on the splice tape to ensure it adheres well to the cover tape and the carrier tapes. This final step completes the splice, ensuring a secure and reliable connection.

##### 3.2 Tips for Optimal Performance:

- Clean Environment:** Perform the splicing in a clean environment to prevent dust and other contaminants from affecting the adhesive.
- Proper Alignment:** Ensure the carrier tapes are properly aligned during the splicing process to prevent feeding issues in the pick-and-place machine.
- Firm Pressure:** Apply firm and even pressure when securing the splice to ensure maximum adhesion.


Universal SMT Single Splice Tapes For Carrier Tape, | GSSMT, SMT Splicing Tape, Carrier Tape Jointing, Universal Splice Tape, Single Splice Tape, Adhesive Tape for SMT, SMT splice tape, SMT splice tape for pick-and-place, SMT splicing solutions, SMT splice tape types, SMT splice tape price, SMT splice tape suppliers, SMT splice tape yellow, SMT splice tape black, SMT splice tape for feeders, SMT splice tape compatibility, SMT splice tape usage guide, High-quality SMT splice tape, SMT splice tape for Panasonic, SMT splice tape for Fuji, SMT splice tape adhesive, SMT splice tape performance, SMT splice tape advantages, SMT splice tape for high-speed machines, SMT splice tape durability, SMT splice tape best practices, china, Universal SMT Single Splice Tapes For Carrier Tape

Part (reel)	Dimensions (pc)	Package(box)
GSM0308 (8mm)	4.8mm x 45mm	4000pcs
GSM0312 (12mm)	6mm x 45mm	4000pcs
GSM0316 (16mm)	9.5mm x 45mm	4000pcs
GSM0324 (24mm)	16mm x 45mm	2000pcs





 **Global Soul Limited**

 +8613728696610

 [liyi@gs-smt.com](mailto:liyi@gs-smt.com)

 [smtmachinepart.com](http://smtmachinepart.com)

Room F3B-016, B Block, Hao Yun Lai Bussiness Building, Liutang road , Bao'an District , Shenzhen, China