

## SMT Siemens Pick And Place Machine D1i With Digital Imaging System

Our Product Introduction

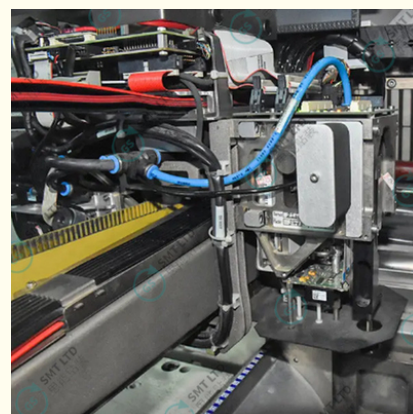
### Basic Information

- Place of Origin: Germany
- Brand Name: ASM/SIEMENS
- Model Number: D1i
- Minimum Order Quantity: 1 PCS
- Price: USD+negotiable+pcs
- Packaging Details: 2100\*2800\*1800mm
- Delivery Time: 1-7 days
- Payment Terms: T/T
- Supply Ability: 1+pcs+per days

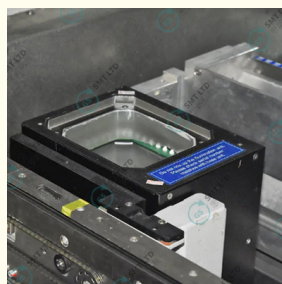
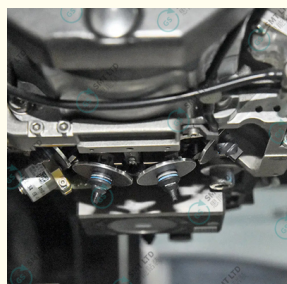


### Product Specification

- Number Of Arms: 1
- Number Of Placement Heads: 2 Or 1
- IPC Speed: 13.000cph
- SIPLACE Benchmark Evaluation: 15.000cph
- Theoretical Speed: 20.000cph
- Component Range (mm<sup>2</sup>): 01005 To 200x125
- Placement Head Features: 6 Nozzle Collect & Placehead
- Mounting Accuracy:  $\pm 52,5\mu\text{m}/3\sigma$
- Angular Accuracy:  $\pm 0,225\mu\text{m}/3\sigma$
- Conveyor Belt Type: SIPLACE Single Track, Flexible Double Track
- Conveyor Mode: Asynchronous, Synchronous
- PCB Size: 50x50mm<sup>2</sup> 610x508mm<sup>2</sup>
- PCB Thickness: 0,3 4,5mm<sup>2</sup> (other Sizes Can Be Customized)



### More Images



for more products please visit us on [smtmachinepart.com](http://smtmachinepart.com)

## Product Description

# Revolutionizing SMT Assembly: The Siemens D1i Precision Pick and Place Machine

The Siemens D1i Precision Pick and Place Machine is a game-changer in the world of surface mount technology (SMT). This article explores its cutting-edge features, benefits, and applications, showcasing how it enhances productivity and precision in electronics manufacturing. With its innovative design and advanced capabilities, the Siemens D1i Machine is setting new standards in the industry.

---

## Introduction to Siemens D1i Machine

The Siemens D1i Machine is a high-precision SMT pick-and-place machine designed to meet the evolving needs of modern production lines. Its advanced features make it ideal for handling a wide range of components while maintaining exceptional speed and accuracy. From small-scale PCB assembly to large-scale industrial applications, the D1i is a versatile solution for manufacturers.

---

## Key Features of Siemens D1i Precision Pick and Place Machine

### 1. High-Speed Component Placement

- Theoretical Speed: Up to 20,000 components per hour (cph) ensures rapid production cycles[1].
- IPC Speed: Achieves 13,000 cph under IPC standards for real-world conditions[1].

### 2. Superior Accuracy

- Placement Accuracy:  $\pm 52.5\mu\text{m}/3\sigma$  ensures precise positioning of components[1].
- Angular Accuracy:  $\pm 0.225\mu\text{m}/3\sigma$  for optimal alignment during placement[1].

### 3. Wide Component Range

- Handles components from 01005 to 200x125 mm<sup>2</sup>, making it suitable for diverse applications[1].

### 4. Flexible PCB Handling

- Supports PCB sizes from 50x50 mm<sup>2</sup> to 610x508 mm<sup>2</sup> with thicknesses ranging from 0.3 mm to 4.5 mm[1].
- Accommodates PCBs up to 3 kg in weight.

### 5. Advanced Placement Heads

- Equipped with six-nozzle Collect&Place heads for efficient multi-component handling[1].

### 6. Digital Imaging System

- Integrated digital imaging ensures real-time quality control during component placement[1].

### 7. Feeder Capacity

- Supports up to 90 feeders with SIPLACE Waffle Tray and Feeding Cart options for streamlined operations[1].

---

## Benefits of Using Siemens D1i Machine

### 1. Enhanced Productivity

The Siemens D1i Machine reduces cycle times while maintaining high levels of precision, enabling manufacturers to meet tight deadlines without compromising quality.

### 2. Cost Efficiency

Its reliable performance minimizes errors and rework, leading to significant cost savings in production.

### 3. Flexibility

The ability to handle a wide variety of components and PCB sizes makes the D1i suitable for both small-batch and large-scale production.

### 4. User-Friendly Operation

The intuitive interface and powerful SIPLACE software simplify machine setup and operation, reducing training time for operators.

---

## Applications of Siemens D1i Precision Pick and Place Machine

### Electronics Manufacturing

The Siemens D1i Machine is widely used in assembling consumer electronics such as smartphones, tablets, and wearable devices.

### Automotive Industry

It plays a crucial role in producing circuit boards for automotive electronics, including sensors, control units, and infotainment systems.

### Telecommunications

The D1i is essential for manufacturing high-density PCBs used in communication devices like routers, modems, and base stations.

## Conclusion

The Siemens D1i Precision Pick and Place Machine is a testament to Siemens' commitment to innovation in SMT technology. Its unmatched speed, accuracy, and versatility make it an indispensable tool for manufacturers looking to stay competitive in today's fast-paced market.

---

## Frequently Asked Questions (FAQs)

### Q1: What is the theoretical speed of the Siemens D1i Machine?

- The theoretical speed is up to 20,000 components per hour (cph)[1].

### Q2: What types of PCBs can the D1i handle?

- It supports PCB sizes ranging from 50x50 mm<sup>2</sup> to 610x508 mm<sup>2</sup> with thicknesses between 0.3 mm and 4.5 mm[1].

### Q3: How accurate is the component placement?

- The placement accuracy is  $\pm 52.5\mu\text{m}/3\sigma$  with angular accuracy at  $\pm 0.225\mu\text{m}/3\sigma$ [1].

### Q4: Can the D1i handle small components like 01005?

- Yes, it can handle components as small as 01005 up to larger sizes like 200x125 mm<sup>2</sup>[1].

### Q5: What industries benefit most from using the Siemens D1i?

- The machine is widely used in electronics manufacturing, automotive industry, and telecommunications.



Global Soul Limited

+8613728696610

[liyi@gs-smt.com](mailto:liyi@gs-smt.com)

[smtmachinepart.com](http://smtmachinepart.com)

Room F3B-016, B Block, Hao Yun Lai Bussiness Building, Liutang road , Bao'an District , Shenzhen, China