



Siemens D1i SMT Pick and Place Machine with 20,000 cph Speed, $\pm 52.5\mu\text{m}/3\sigma$ Accuracy, and Digital Imaging System

Our Product Introduction

for more products please visit us on smtmachinepart.com

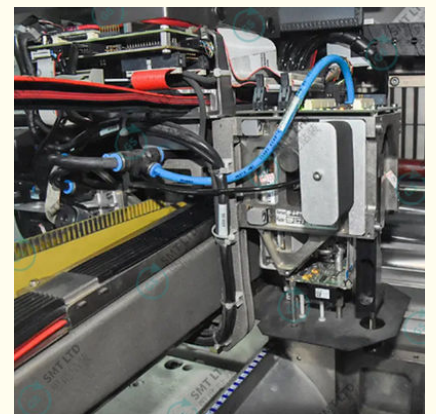
Basic Information

- Place of Origin: Germany
- Brand Name: ASM/SIEMENS
- Model Number: D1i
- Minimum Order Quantity: 1 PCS
- Price: USD+negotiable+pcs
- Packaging Details: 2100*2800*1800mm
- Delivery Time: 1-7 days
- Payment Terms: T/T
- Supply Ability: 1+pcs+per days

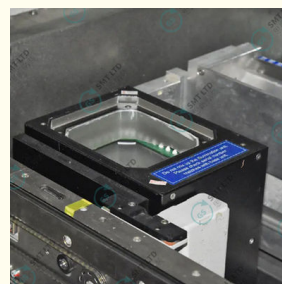
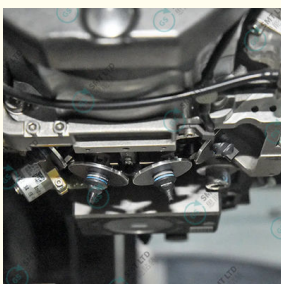


Product Specification

- Number Of Arms: 1
- Number Of Placement Heads: 2 Or 1
- IPC Speed: 13.000cph
- SIPLACE Benchmark Evaluation: 15.000cph
- Theoretical Speed: 20.000cph
- Component Range (mm²): 01005 To 200x125
- Placement Head Features: 6 Nozzle Collect & Placehead
- Mounting Accuracy: $\pm 52.5\mu\text{m}/3\sigma$
- Angular Accuracy: $\pm 0.225^\circ/3\sigma$
- Conveyor Belt Type: SIPLACE Single Track, Flexible Double Track
- Conveyor Mode: Asynchronous, Synchronous
- PCB Size: 50x50mm² 610x508mm²
- PCB Thickness: 0,3 4,5mm² (other Sizes Can Be Customized)



More Images



Product Description

SMT Siemens Pick And Place Machine D1i With Digital Imaging System

Revolutionizing SMT Assembly: The Siemens D1i Precision Pick and Place Machine

The Siemens D1i Precision Pick and Place Machine represents a significant advancement in surface mount technology (SMT). This high-precision equipment delivers cutting-edge features, benefits, and applications that enhance productivity and precision in electronics manufacturing, setting new industry standards.

Introduction to Siemens D1i Machine

The Siemens D1i Machine is a high-precision SMT pick-and-place system engineered to meet the dynamic requirements of modern production environments. Its advanced capabilities make it ideal for handling diverse component types while maintaining exceptional speed and accuracy, serving applications from small-scale PCB assembly to large-scale industrial manufacturing.

Key Features of Siemens D1i Precision Pick and Place Machine

- High-Speed Component Placement:** Theoretical speed up to 20,000 components per hour (cph) with IPC-standard performance of 13,000 cph for real-world conditions
- Superior Accuracy:** Placement accuracy of $\pm 52.5\mu\text{m}/3\sigma$ with angular accuracy of $\pm 0.225\mu\text{m}/3\sigma$ for optimal component alignment
- Wide Component Range:** Handles components from 01005 to 200x125 mm² for diverse application requirements
- Flexible PCB Handling:** Supports PCB sizes from 50x50 mm² to 610x508 mm² with thicknesses from 0.3 mm to 4.5 mm and accommodates PCBs up to 3 kg
- Advanced Placement Heads:** Equipped with six-nozzle Collect&Place heads for efficient multi-component handling
- Digital Imaging System:** Integrated digital imaging ensures real-time quality control during component placement
- Feeder Capacity:** Supports up to 90 feeders with SIPLACE Waffle Tray and Feeding Cart options for streamlined operations

Benefits of Using Siemens D1i Machine

- Enhanced Productivity:** Reduces cycle times while maintaining high precision, enabling manufacturers to meet tight deadlines without quality compromise
- Cost Efficiency:** Reliable performance minimizes errors and rework, leading to significant production cost savings
- Flexibility:** Capable of handling diverse components and PCB sizes, suitable for both small-batch and large-scale production
- User-Friendly Operation:** Intuitive interface and powerful SIPLACE software simplify machine setup and operation, reducing operator training time

Applications of Siemens D1i Precision Pick and Place Machine

Electronics Manufacturing: Widely used in assembling consumer electronics including smartphones, tablets, and wearable devices

Automotive Industry: Essential for producing circuit boards for automotive electronics, including sensors, control units, and infotainment systems

Telecommunications: Critical for manufacturing high-density PCBs used in communication devices such as routers, modems, and base stations

Technical Specifications

Specification	Value
Theoretical Speed	Up to 20,000 cph
IPC Speed	13,000 cph
Placement Accuracy	$\pm 52.5\mu\text{m}/3\sigma$
Angular Accuracy	$\pm 0.225\mu\text{m}/3\sigma$
Component Range	01005 to 200x125 mm ²
PCB Size Range	50x50 mm ² to 610x508 mm ²
PCB Thickness	0.3 mm to 4.5 mm
Maximum PCB Weight	3 kg

Feeder Capacity	Up to 90 feeders
-----------------	------------------

Frequently Asked Questions

What is the theoretical speed of the Siemens D1i Machine?

The theoretical speed is up to 20,000 components per hour (cph).

What types of PCBs can the D1i handle?

It supports PCB sizes ranging from 50x50 mm² to 610x508 mm² with thicknesses between 0.3 mm and 4.5 mm.

How accurate is the component placement?

The placement accuracy is $\pm 52.5\mu\text{m}/3\sigma$ with angular accuracy at $\pm 0.225\mu\text{m}/3\sigma$.

Can the D1i handle small components like 01005?

Yes, it can handle components as small as 01005 up to larger sizes like 200x125 mm².

What industries benefit most from using the Siemens D1i?

The machine is widely used in electronics manufacturing, automotive industry, and telecommunications.



Global Soul Limited



+8613728696610



liyi@gs-smt.com



smtmachinepart.com

Room F3B-016, B Block, Hao Yun Lai Bussiness Building, Liutang road , Bao'an District , Shenzhen, China