

## Electric Steel Mesh Cleaning Machine 25KW

Our Product Introduction

for more products please visit us on [smtmachinepart.com](http://smtmachinepart.com)

### Basic Information

- Place of Origin: China
- Brand Name: GS
- Model Number: RL-8100
- Minimum Order Quantity: 1 PCS
- Price: USD+negotiable+pcs
- Packaging Details: 1400\*1350\*2000mm
- Delivery Time: 1-7 days
- Payment Terms: T/T
- Supply Ability: 1+pcs+per days



### Product Specification

- Applicable Steel Mesh Size: L750 × W750 × H40(mm) [large Size Needs To Be Customized]
- Equipment Dimensions: L1220\*W1120\*H1850 (mm)
- Maximum Volume Of Liquid 50L\*2PCS Tank:
- Optimal Liquid Usage: 40L\*2PCS
- Cleaning, Rinsing, Drying Method: Left And Right Mobile High Pressure Spray Cleaning + High Pressure Hot Air Cutting (optional Super Model)
- Cleaning Solution Isolation Time: 40 To 60S
- Cleaning Time: 2-5min
- Drying Time: 2-5min
- Filtration System (Level 1): Level 1 Filter Element Filtration: (Filter Impurities And Labels)
- Filtration System (secondary): Secondary Filter Filter: (filter Solder Paste And Rosin Particles)



## Product Description

### Machine characteristics

- High pressure spray system specially used for water based cleaning liquid cleaning screen board, misprint board, printing machine scraper, etc.
- Double liquid tank, equipped with heating system, to meet the needs of cleaning, rinsing and hot air drying.
- Process flow: cleaning - chemical isolation - rough rinsing (open/closed loop) - fine rinsing (open/closed loop) - drying.
- Advanced automatic touch screen operating software, program file saving, use and simplification.
- The system counting function can automatically accumulate the number of cleaning boards and the number of cycle filtering.
- Liquid and pump pressure can be displayed through the panel pressure gauge, timely feedback equipment operating status.
- Spray pressure is monitored by pressure sensor, which will alarm if it exceeds the set pressure range.
- Liquid direct reflux, reduce liquid consumption
- The whole stainless steel body is durable, resistant to acid, alkaline and other cleaning fluids.
- High pressure fan + hot air drying, drying effect is faster and more thorough.
- Lower operating costs, each cleaning only 30-120ml liquid, the end of the cleaning using compressed air to recover the pipeline and pump residual liquid, can reduce liquid consumption by 50%.

Global Soul Limited

[sales@gs-smt.com](mailto:sales@gs-smt.com)



## Electric steel mesh cleaning machine

### Function Introduction

- Touch screen operation interface  
Adopt stable and reliable imported brand color touch screen, aiming at: solvent temperature, cleaning time, rinsing frequency/time, rinsing temperature, drying time, drying temperature parameters, etc.



## Electric steel mesh cleaning machine

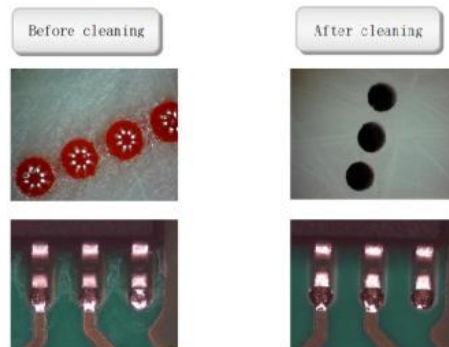
### Function introduction

- Visual sealing design, can observe the whole cleaning process.



## Electric steel mesh cleaning machine

### Comparison of cleaning effect



Electric steel mesh cleaning machine | GSSMT, SMT steel mesh cleaning machine, Electric cleaning equipment for steel mesh, Automated steel mesh cleaner, Industrial mesh cleaning machine, Pneumatic steel mesh cleaning system, PCB steel mesh cleaning equipment, High-efficiency mesh cleaning machine, Electric mesh cleaning solutions, SMT cleaning equipment, Steel mesh washer for electronics, Automatic mesh cleaning machine, Eco-friendly steel mesh cleaner, Cleaning machines for PCB stencils, Compressed air steel mesh cleaner, Dual-sided steel mesh cleaning machine, Electric swab cleaning machine, Professional steel mesh cleaning system, High-capacity electric cleaner for meshes, Mesh board cleaning technology, Custom electric steel mesh cleaners

