



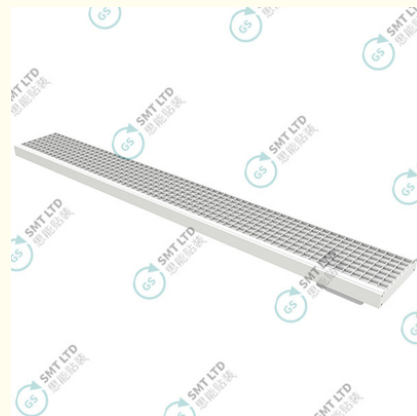
SMT Bright LED Workshop Lighting Solutions For Precision Soldering Assembly

Our Product Introduction

for more products please visit us on smtmachinepart.com

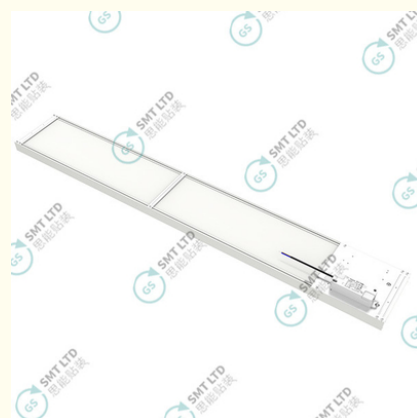
Basic Information

- Place of Origin: China
- Brand Name: GS
- Model Number: GSPL1402GBY8
- Minimum Order Quantity: 1 PCS
- Price: USD+negotiable+pcs
- Packaging Details: 1500*230*57mm
- Delivery Time: 1-7 days
- Payment Terms: T/T
- Supply Ability: 1+pcs+per days

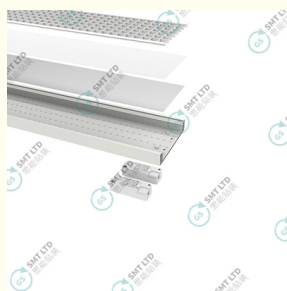


Product Specification

- Size(mm): 1400*200*37
- Input Voltage: AC220-240V
- Output Voltage: DC24-42V
- Power (W): 80W
- Luminous Flux (lm)±10%: 7400
- Color Temperature (K): 5000
- Explicit Ra>: 80
- UGR<: 22
- Appearance Color: White
- Condition: Original New
- Highlight: SMT LED Workshop Lighting,
Bright LED Workshop Lighting



More Images



Product Description

SMT Workshop Lighting - Bright, Energy-Efficient LED Lights for Precision Workstations

Enhance your SMT (Surface-Mount Technology) production environment with our high-performance workshop lighting. Designed for precision soldering and assembly tasks, our LED lights provide consistent, bright, and flicker-free illumination to reduce eye strain and improve accuracy. With energy-efficient technology, our lights offer long-lasting durability and cost savings while ensuring optimal visibility for detailed work on PCBs and other components. Perfect for SMT workstations, assembly lines, and electronics production environments.

Key Features:

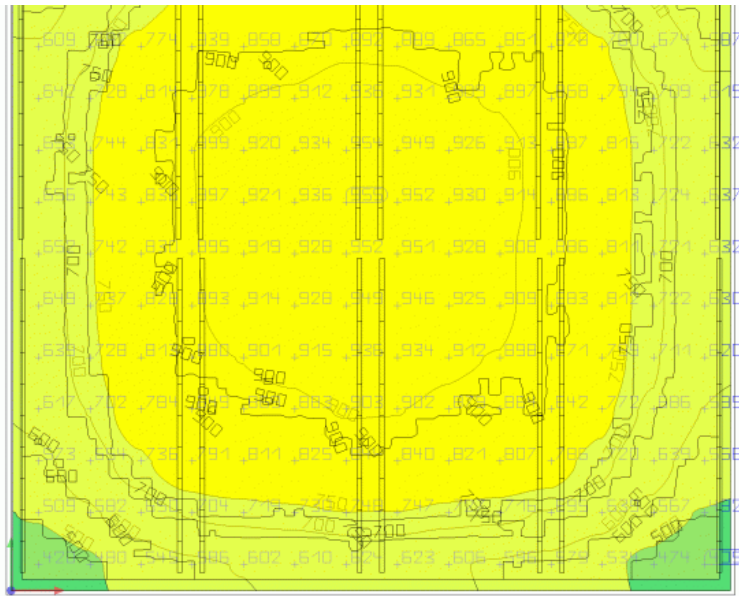
1. Bright, Even Lighting: Delivers clear, uniform light with no flicker, ideal for detailed electronic assembly.
2. Energy-Efficient: Low power consumption with high lumen output to save on electricity costs.
3. Durable & Long-Lasting: Built to withstand the demands of a busy SMT workshop.
4. Minimal Heat Emission: Keeps the workspace comfortable and safe, reducing the risk of overheating.
5. Easy Installation: Suitable for overhead mounts and various workshop setups.

Upgrade your SMT workstation with our advanced lighting solutions for greater productivity and precision.

Global Soul Limited

sales@gs-smt.com





Global Soul Limited



+8613728696610



liyi@gs-smt.com



smtmachinepart.com

Room F3B-016, B Block, Hao Yun Lai Bussiness Building, Liutang road , Bao'an District , Shenzhen, China